

Fire Siganse and extinguishers for protected zone

Fire exit

Fire action

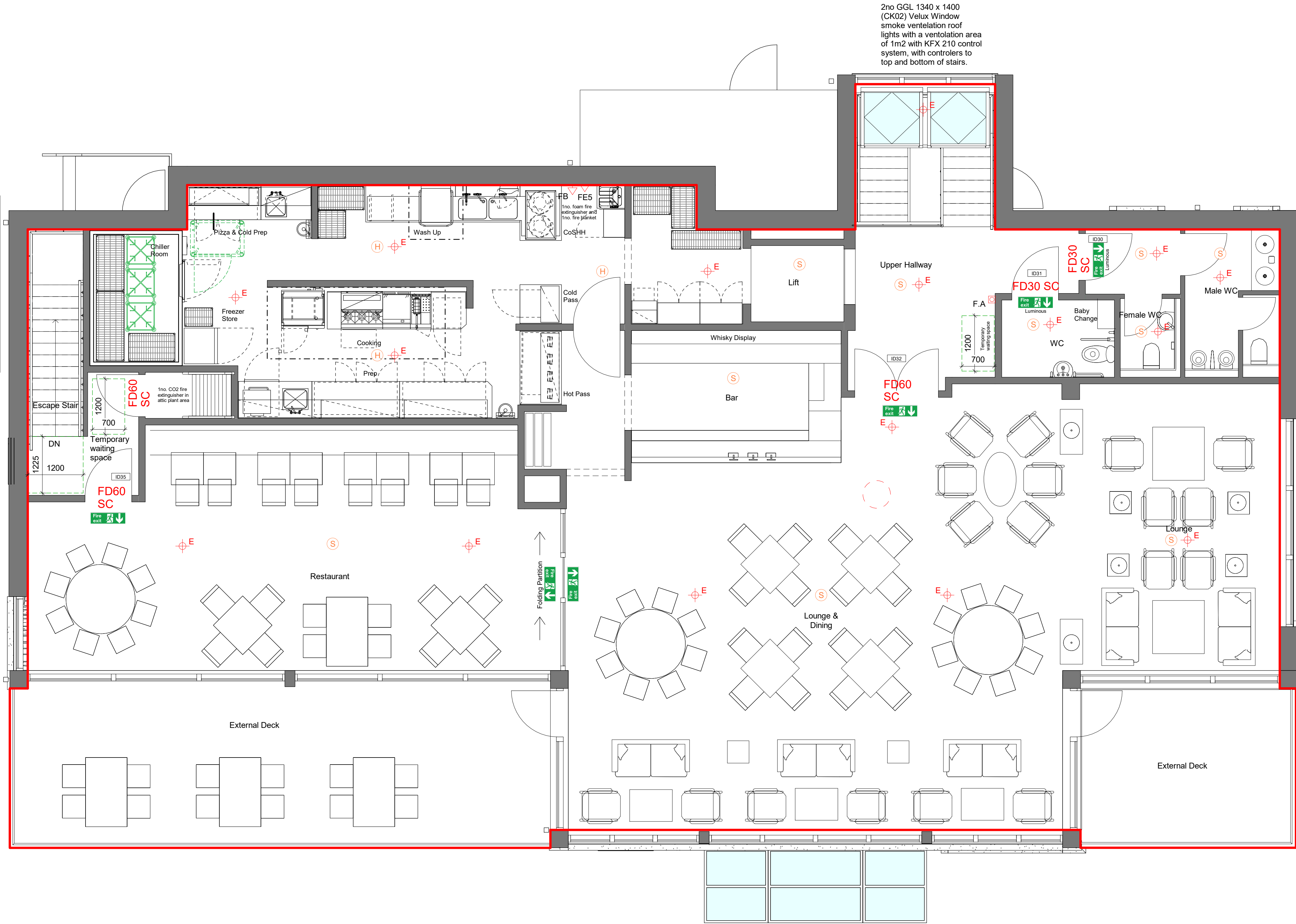
Fire escape keep clear

Fire escape

F.A

E

Smove Vent to allow 1m2 area of ventelation, with controlers top and botome of the stair



FIRE STRATEGY LEGEND

- 1 Hr Separating Wall Gyprock Shaftwall
- FD60 Door, frame and glazing to have 1HR FR to BS476
- SC Door to be self closing
- Smoke Vent Break Glass
- Smoke Vent Control Panel
- Denotes Area of Protected Zone - Shaft Wall Ceiling 60min

FIRE SAFETY EQUIPMENT:

- Fire Alarm Panel
- F.A Fire alarm break glass point
- Fire alarm sounder - 2100mm above floor level to centre of unit. Sounder to BS 5839: Part 1 2002: Sounder position shown only as indicative and to be positioned to comply with Section 9.4 of BS 5839:Part 1 1988 "Audibility of Alarms"
- Fire extinguisher 5kg locations
- Fire blanket

SIGNAGE & EMERGENCY LIGHTING:

- Illuminated Signage
- Illuminated Signage - Arrow left or right (To indicate left or right direction of travel)
- Luminous Adhesive Signage
- Luminous Adhesive Signage (Arrow to shown left or right as applicable)
- Luminous Sign applied to all doors with Push Bars
- Adhesive Sign applied to all final exits
- Fire Action Sign
- Emergency 3hr self-contained maintained battery back-up light fitting to BS 5266 part 1: 2005

NOTES:

- The lift doors come as standard 120m fire rated as per manufacturers literature. The lift is integrated to the fire alarm system and programmed to return to ground floor, stop and door to lobby to open to allow occupants to evacuate.

NOTE

This drawing is the copyright of G1 Architects and the contents shall not be reproduced or used for any other purpose without their written permission. Do not use scaled dimensions from this drawing. All dimensions are to be verified and checked on site by the main contractor before the commencement of any work whatsoever, either on his behalf or for subcontractors or suppliers. Shop drawings to be presented to the architect for approval prior to fabrication. All discrepancies are to be reported to the architect immediately. Drawing to be read in conjunction with all other architects, engineers and specialists drawings + specifications

If in doubt ASK

No		Description	Date	
Revision Notes				
<div><div></div><div><div>G1 Architects</div><div>3rd Floor West</div><div>211 Dumbarton Road</div><div>Glasgow G11 6AA</div></div><div><div>t 0141 334 4881</div><div>info@g1architects.com</div><div>www.g1architects.com</div></div></div>				
Drawing Status			Suitability	
Licence				
Project		Drawing Title		
Machrihanish Golf Clubhouse Golf Club House, Machrihanish, PA28 6PT		First Floor - Licence Plan		
Scale	Size	Drawn	Checked	Date
As indicated	A1	AW	RM	09/15/20
Drawing No				
UPRN Originator Zone Level Type Role Number Revision 655-G1-B1-01-DR-A-PL22				